

NUDO[®]

Laminated Panels With A Purpose



Ceiling Panels

Built for Easy Installation, Sanitation, Durability and Low Maintenance

Easy Installation & Durability

Anyone who has done the work knows putting in a ceiling can be a big job. If you want to cut back on the time required without cutting corners, try Nudo Ceiling Panels.

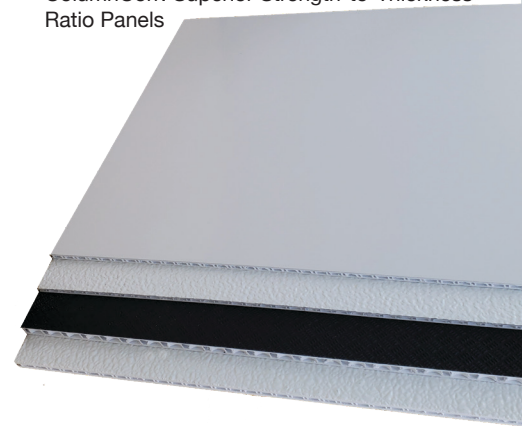
At Nudo, we're dedicated to the idea that simplicity and stability work together. Our panels are made of Fiberglass Reinforced Plastic (FRP), Aluminum or other overlays factory laminated to a variety of substrates.

Simply install the panels directly to any drop ceiling framing, vinyl or metal grid. Clip panels in place if required. (Nudo Panels fit all available drop ceiling systems). Panels can be cut using standard hand and power tools. Some double-faced panels will clear a span up to four feet and can be easily adapted to your specific needs. Please call a factory representative to discuss these options.

Our panels are available with textured and smooth surfaces, and some can be laminated on both sides to increase structural balance and panel rigidity. They are available in many sizes, colors and thicknesses. Standard cut sizes are: 23-3/4" x 23-3/4", 23-3/4" x 47-3/4", 47-3/4" x 47-3/4" unless otherwise specified. Other sizes available. An FRP Ceiling Grid System is available.

Note: Not all tiles will perform in a 4x4 grid. Please call a factory representative to discuss these options.

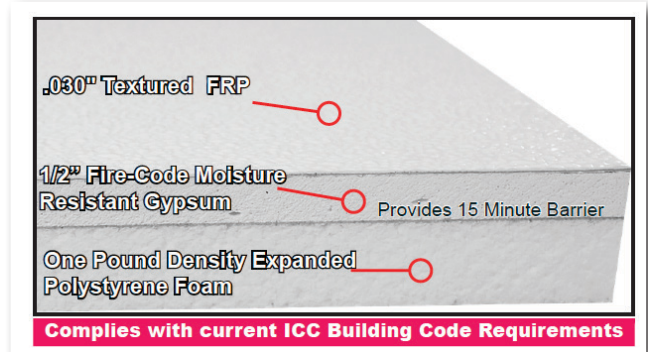
ColumnCorr: Superior Strength-to-Thickness Ratio Panels



NUDO Prelaminated Insulated Ceiling Panels

Nudo's prelaminated insulated ceiling panels are ideal when moisture and condensation factors must be considered in your building's ceilings. They are built for easy installation, sanitation, durability and low maintenance.

- Textured or smooth fiberglass (FRP) or aluminum surface (2 Sides)
- Both sides factory laminated to expanded or extruded polystyrene foam
- Maximum moisture resistant extruded or expanded polystyrene foam substrate core
- Foam backed ceiling tiles come with a standard 1/2" fire-code/moisture resistant gypsum providing an approved 15-minute thermal barrier system
- Accepted by USDA, FDA and Agriculture Canada inspected facilities
- Highly resistant to condensation
- Stops moisture & bacteria from forming
- Class C fire-rated surface, Class A available
- Available in nominal 2' x 2', 2' x 4'
- .030" FRP overlay (.050" and .090" FRP available)
- Thermal resistance for cold or heat transference
- Always lays flat, will not warp
- Lightweight
- Other substrates and overlays available

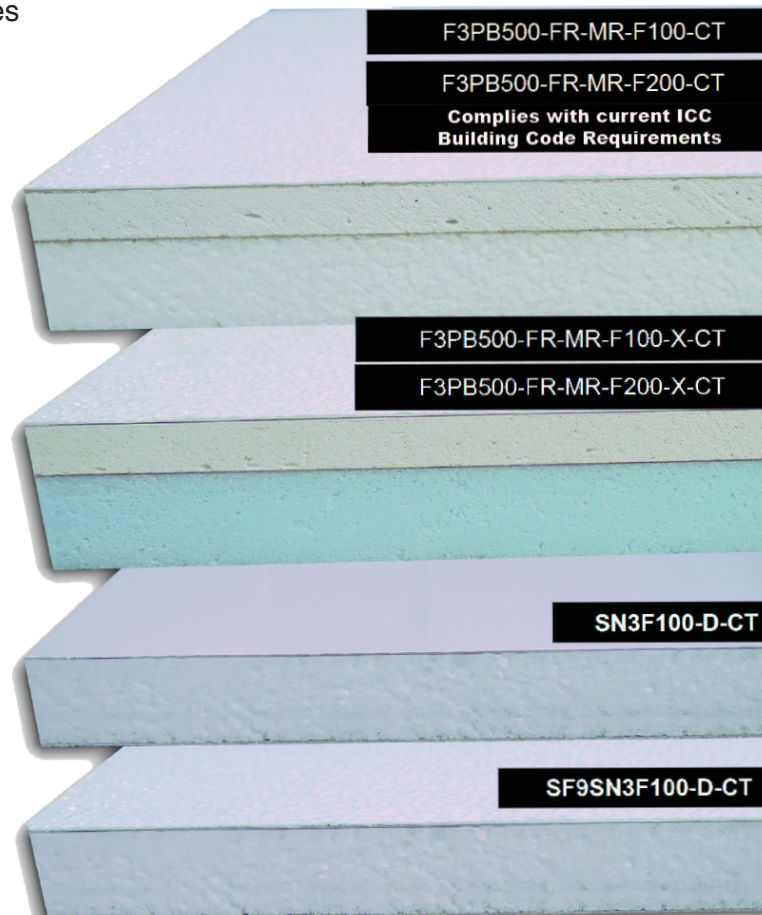


COMMON USES FOR NUDO INSULATED CEILING PANELS

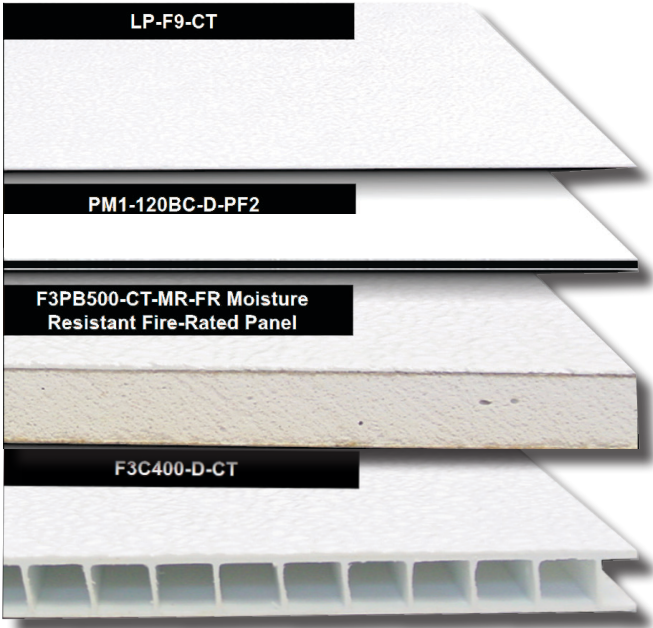
Animal Facilities
 Bakeries
 Cafeterias
 Car Washes
 Cheese Plants

Clean Rooms
 Cold Storage
 Commercial Buildings
 Confinement Buildings
 Correctional Facilities

Farm Buildings
 Food Processing Plants
 Freezer Rooms
 Kennels



NUDO Standard Ceiling Panels



- .030", .050" and .090" FRP available for lamination
- Textured or smooth fiberglass (FRP) or aluminum surface
- Laminated to gypsum, ACM, fluted polypropylene, EPS & XPS foam
- For structural stability and panel rigidity, double-sided lamination is available
- Accepted for use in USDA, FDA and Agriculture Canada inspected facilities
- Strong, shatter resistant
- Class C fire-rated surface, Class A available
- Thermal shock and chemically resistant
- Stain, odor and 100% moisture resistant surface
- Cost effective
- Easy installation and maintenance
- Available in nominal 2' x 2' or 2' x 4'

COMMON USES FOR NUDO STANDARD CEILING PANELS

Car Washes
 Clean Rooms
 Confinement Facilities
 Food Processing Plants
 Healthcare Facilities

Kitchens
 Laboratories
 Offices
 Restaurants
 Restrooms

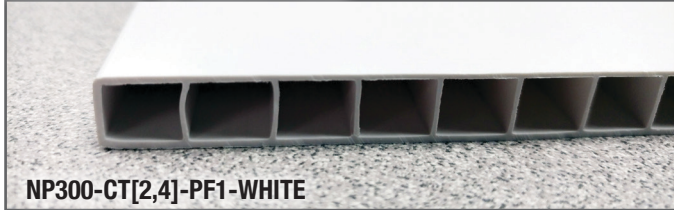
Schools
 Shower Areas
 Supermarkets
 Veterinary Facilities
 Warehouses



UTILITE INTERLOCKING CEILING PANEL



UTILITE DROP-IN CEILING PANEL



NUDO Ceiling Panel Products

STANDARD CEILING PANELS

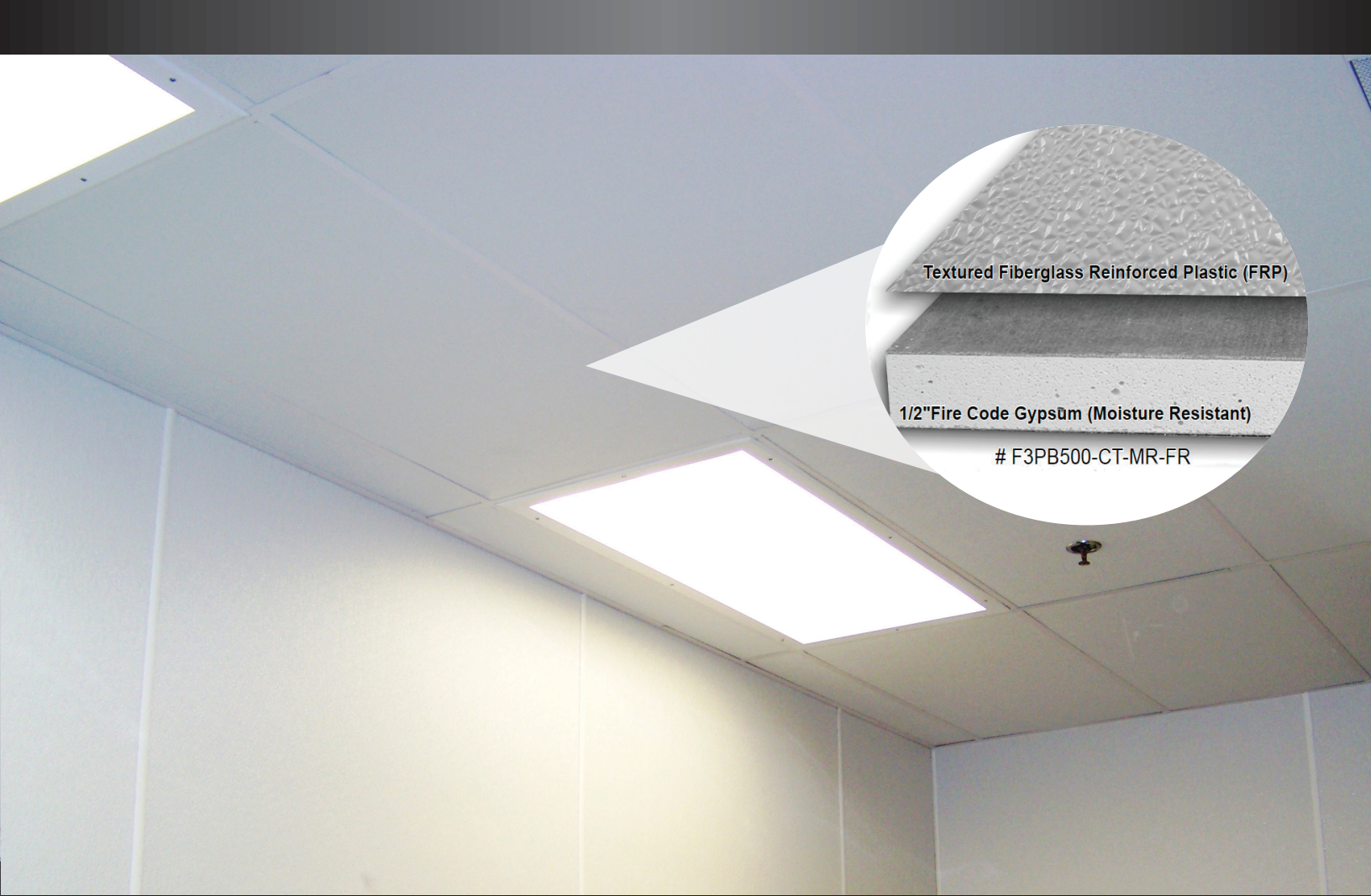
	Nominal Thickness (in)	Description	Wt.-lbs./sq.ft.	Available Sizes
LP-F9-CT	.090	Fiberglass Reinforced Plastic (FRP)	0.7	2' x 2'
LP-F12-CT	.120	Fiberglass Reinforced Plastic (FRP)	1	2' x 2', 4'
PM1-120BC-D-CT-PF2	.120	Solid Recycled Polyethylene Core Sandwiched by 2 Aluminum Sheets	1	2' x 2', 4'
PM1-240BC-D-CT-PF2	.240	Solid Recycled Polyethylene Core Sandwiched by 2 Aluminum Sheets	2	2' x 2', 4'
SN1C400-D-CT	.400	.4 (10mm) Fluted Polypropylene Core Sandwiched by 2 .013 Aluminum Sheets	.687	2' x 2', 4'
NP300-CT[2,4]-PF1	.400	.4 Vinyl Fluted Drop-In Panels (UtiLite)	.7	2' x 2', 4'
NP400-[24"] X [8"]-PF1	.400	.4 Vinyl Fluted Interlocking Panels (UtiLite)	.7	2'x 8',10',12',16', 20'
NP400-[8"]-PF1	.400	.4 Vinyl Fluted Interlocking Panels (UtiLite)	.7	16"x 8',10',12',16', 20'
F3PB500-CT-MR-FR	.500	.030" FRP laminated to 1/2" Moisture Resistant Fire Rated Gypsum	2.25	2' x 2', 4'
F3PB625-CT-FR-MR	.625	.030 FRP Laminated to 5/8" Moisture Resistant Fire Rated Gypsum	2.25	2' x 2', 4'
F3C400-D-CT	.400	.030 FRP Laminated to Both Sides of .4 (10mm) Fluted Polypropylene Core	1	2' x 2', 4'
SN1BX3-D-CT	.500	.013 Aluminum Laminated to Both Sides of 3mm Co-Extruded Polypropylene	0.5	2' x 2', 4'

INSULATED CEILING PANELS

	Nominal Thickness (in)	Description	Wt.-lbs./sq.ft.	Available Sizes
F3PB500-FR-MR-F100X-CT	1"	.030 Textured or Smooth FRP laminated to Moisture Resistant .5 (1/2") Fire Rated Gypsum with a 2lb density 1" Extruded Polystyrene Foam. Thermal Resistance of R-4/in	2.25	2' x 2', 4'
F3PB500-FR-MR-F200X-CT	2"	.030 Textured or Smooth FRP laminated to Moisture Resistant .5 (1/2") Fire Rated Gypsum with a 2lb density 2" Extruded Polystyrene Foam. Thermal Resistance of R-5/in	2.7	2' x 2', 4'
F3PB500-FR-MR-F100-CT	1"	.030 Textured or Smooth FRP laminated to Moisture Resistant .5 (1/2") Fire Rated Gypsum with a 2lb density 1" Expanded Polystyrene Foam. Thermal Resistance of R-4/in	2.25	2' x 2', 4'
F3PB500-FR-MR-F200-CT	2"	.030 Textured or Smooth FRP laminated to Moisture Resistant .5 (1/2") Fire Rated Gypsum with a 2lb density 2" Expanded Polystyrene Foam. Thermal Resistance of R-5/in	2.7	2' x 2', 4'
(S)N3F100-D-CT	1" or 2"	.032 Textured or Smooth Aluminum Face laminated to 1" Expanded Foam Core Double Sided (NuAlum)	.78	2' x 2', 4'
(S)N3F100X-D-CT	1" or 2"	.032 Textured or Smooth Aluminum Face laminated to 1" Expanded Foam Core Double Sided (NuAlum)	.78	2' x 2', 4'
(S)F9F100-D-CT	1" or 2"	.090 Textured or Smooth Face laminated to 1" Expanded Foam Core Double Sided	1.47	2' x 2', 4'
(S)F9F100X-D-CT	1" or 2"	.090 Textured or Smooth Face laminated to 1" Extruded Foam Core Double Sided	1.56	2' x 2', 4'

Note: "X" denoted for extruded foam and "S" denoted for smooth

Meets Current International Building Code Requirements



Textured Fiberglass Reinforced Plastic (FRP)

1/2" Fire Code Gypsum (Moisture Resistant)

F3PB500-CT-MR-FR

Whether your job is large or small, here at Nudo we make your job simpler. We know once you try Nudo Ceiling Panels, you'll agree. We'll be happy to send you samples to examine. Complete installation guidelines and technical assistance is available on www.nudo.com as well.

————— VISIT [NUDO.COM](http://www.nudo.com) FOR COMPLEMENTARY TRIMS TO —————
COMPLETE YOUR CEILING PANEL SYSTEM

NUDO[®]
A VERZATEC COMPANY

1500 Taylor Avenue
Springfield, IL 62703
www.Nudo.com

Ph: 800.826.4132
Fax: 217.528.8722

Form 1045.L Rev 07/21

Visit www.Nudo.com or
contact our local dealer for details.