

NUDO®

YOUR VISION IS OUR MISSION™



Endurex™

Exterior Insulated and Non-Insulated Panels

IN-FILL GLAZING PANELS • STOREFRONTS • CURTAIN WALLS • WINDOWS AND DOOR FRAMES

ENDUREX™ QUICK REFERENCE CHART

Endurex is a line of exterior architectural products focused on extending the life of the building. These in-fill/glazing panels offer various finish options to provide design flexibility, as well as insulation options to meet your buildings envelope requirements.

	Endurex 300	Endurex 500	Endurex 555
Description	1/4" stabilizer in between two sheets of aluminum	A layer of insulation in between two stabilizers and 2 sheets of aluminum	High impact hurricane panel featuring moisture resistant stabilizers
Use	Exterior in-fill/glazing storefront panel	Exterior insulated in-fill panel for window and door frames, storefronts and curtain walls	Exterior in-fill panel that provides full impact resistance
Substrate	Available in composite, corrugated, hardboard and cement board stabilizers	Available in composite, corrugated, hardboard and cement board stabilizers	High impact reinforced plastic



ENDUREX™ 300 SERIES

Nudo's Endurex line of exterior architectural products focuses on extending the life of the building. The Endurex 300 Series is comprised of a 1/4" stabilizer sandwiched between two sheets of aluminum. Various aluminum, core and finish options provide design flexibility to meet your building envelope requirements.

CHOOSING THE RIGHT CORE AND FINISH

Nudo offers the widest range of core/stabilizer and finish options available. This assures you the best possible solution and longest lasting panel for your building, storefront or curtain wall. Review all the Endurex 300 Series offerings to find the right choice for your building requirements.



ONLY NUDO OFFERS THE ENDUREX 300 PANEL

Endurex 300 is the only 1/4" glazing panel that offers a solid plastic core that will not absorb moisture and yet offers exceptional impact resistance.



	Product Description	Fire-Rating	Finish Option	Available Sizes	Warranty
Endurex 300	The most innovative "next generation" glazing and storefront panel available. This 1/4" in-fill panel features .008" smooth or embossed aluminum on both sides of a solid thermoplastic core. It combines all the best features of moisture and impact resistance with excellent rigidity.	Both Class "A" fire-rated and formable if required	Polyester paint finish	4' x 8', 4' x 10'	5-year limited warranty
Endurex 310	Moisture resistant, 1/4" glazing panel with .013" smooth or embossed aluminum on both sides of a corrugated plastic core.	Class "A"	Polyester paint finish	4' x 8', 4' x 10', 4' x 12' (5' x 8' and 5' x 10' available in smooth white only)	5-year limited warranty
Endurex 315	Moisture resistant, 1/4" glazing panel with .032" smooth or embossed aluminum on both sides of a corrugated plastic core.	Class "A"	Kynar or Anodized finished aluminum	4' x 8', 4' x 10', 4' x 12' (5' x 8' and 5' x 10' available in limited colors)	15-year limited warranty
Endurex 320	1/4" glazing panel with .013" smooth or embossed aluminum on both sides of a tempered hardboard core.	Not Tested	Polyester paint finish	4' x 8', 4' x 10', 4' x 12'	5-year limited warranty
Endurex 325	1/4" glazing panel with .032" smooth or embossed aluminum on both sides of a tempered hardboard core.	Not Tested	Kynar or Anodized finished aluminum	4' x 8', 4' x 10', 4' x 12'	15-year limited warranty
Endurex 330	Fire and moisture resistant 1/4" glazing panel with .013" smooth or embossed aluminum on both sides of a cement board.	Class "A"	Polyester paint finish	4' x 8' and 4' x 10'	5-year limited warranty
Endurex 335	Fire and moisture resistant 1/4" glazing panel with .032" smooth or embossed aluminum on both sides of a cement board.	Class "A"	Kynar or Anodized finished aluminum	4' x 8' and 4' x 10'	15-year limited warranty
Endurex 350P	1/4" porcelain faced in-fill panels that provide the longest lasting architectural finish on the market.	Class "A" with Cement Board Stabilizer	3' and 4' wide: 28 Gauge Porcelain 5' wide: 24 Gauge Porcelain	Call for available sizes and stabilizers	5-year limited warranty

ENDUREX™ 500 SERIES

The Endurex 500 Series not only extends the life of the building, but also provides energy savings. The panel starts with an insulating foam core that is protected on either side by a variety of stabilizers. The exterior of the panel is then covered with a smooth or textured painted aluminum skin. A wide variety of aluminum finishes, foam cores and stabilizers provide design flexibility to meet your building envelope requirements.

CHOOSING THE RIGHT CORE AND FINISH

Nudo wants to be sure you have the right panel option for your building requirement. For that reason, we offer the widest variety of panel components available. Insulating foams with very high R-values, moisture resistant and impact resistant stabilizers, are all combined with the best Anodized, Kynar and polyester paint finishes available. Your building envelope will look spectacular, while providing energy savings year after year. Review all the Endurex 500 Series offerings to find the right choice for your building requirements.



ONLY NUDO OFFERS THE ENDUREX 500 PANEL

Endurex 500 is the only 1" glazing panel that offers solid plastic stabilizers that will not absorb moisture and yet offers exceptional impact resistance.

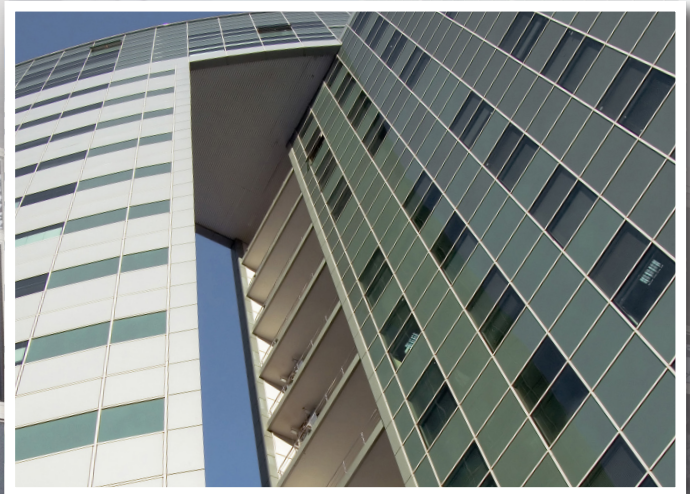
Product Description	Fire-Rating	Finish Option	Available Sizes	Warranty
Endurex 500 Combines all the benefits of moisture resistant ACP/ACM panels with a foam insulating core. Rather than standard hardboard stabilizers that can absorb water, or even the next generation of corrugated plastic stabilizers which have less rigidity and impact resistance, the Endurex 500 panel has solid plastic core stabilizers backed by an extra layer of aluminum behind each stabilizer.	Class "A"	Polyester paint finish	4' x 8', 4' x 10', 4' x 12' (5' x 10' available in smooth white only)	5-year limited warranty
Endurex 510 Standard 1" insulated glazing panel with corrugated plastic stabilizers on both sides of a 2lb EPS foam core. More moisture resistant than the Endurex 520, but less impact resistant than the Endurex 500, 520 or 530.	Not Tested	Polyester paint on either smooth or embossed aluminum	4' x 8', 4' x 10', 4' x 12' (5' x 8' and 5' x 10' available in smooth white only)	5-year limited warranty
Endurex 515 Start with the benefits of the Endurex 510 (above) and add a .032" (.040", .060" available) Kynar or Anodized finished aluminum.	Not Tested	Kynar or Anodized finished aluminum	4' x 8', 4' x 10', 4' x 12' (5' x 8' and 5' x 10' available in limited colors)	15-year limited warranty
Endurex 520 The most traditional 1" insulated panel using tempered hardboard as stabilizers around 2lb EPS foam core. The Endurex 520 does not offer the same moisture and impact resistance found in the Endurex 500.	Class "A"	Polyester paint finish	4' x 8', 4' x 10', 4' x 12'	5-year limited warranty
Endurex 525 Take the Endurex 520 and add a .032" (.040", .060" available) Kynar or Anodized finished aluminum.	Class "A"	Kynar or Anodized finished aluminum	4' x 8', 4' x 10', 4' x 12'	15-year limited warranty
Endurex 530 Cement board stabilizers and greater fire-resistance are the hallmark of the Endurex 530. Used when maximum fire-resistance is required such as in schools and hospitals. Endurex 530 can also include a 1/2" or 5/8" gypsum stabilizer instead of cement board. Fire-resistant foam such as Polyisocyanurate (Iso) is generally specified. It also provides a higher R-value.	Class "A"	Polyester paint on either smooth or embossed aluminum	4' x 8' and 4' x 10'	5-year limited warranty
Endurex 535 To increase the "finish life" of the Endurex 530 add a .032" (.040", .060" available) Kynar or Anodized finished aluminum.	Class "A"	Kynar or Anodized finished aluminum	4' x 8' and 4' x 10'	15-year limited warranty
Endurex 540 Laminated composite panel consisting of ceramic backed spandrel glass, an insulating core material and a finished interior. A low cost, glazing option for curtain wall, spandrel and window applications.	Class "A"	Kynar, Anodized or Polyester	Call for available sizes and stabilizers	5-year limited warranty
Endurex 550P 1" porcelain faced insulated in-fill panels that provide the longest lasting architectural finish on the market.	Class "A" with Cement Board Stabilizer	3' and 4' wide: 28 Gauge Porcelain 5' wide: 24 Gauge Porcelain	Call for available sizes and stabilizers	5-year limited warranty

ENDUREX™ 555 HURRICANE/HIGH IMPACT

Nudo's "High Impact Hurricane" panel is like no other in the industry. While other such panels have relied on a layer of steel to meet the impact requirements, Nudo has engineered an innovative panel that offers tremendous features and benefits without compromising impact resistance. In fact, Endurex 555 has received the Miami-Dade County, Florida Notice of Acceptance (NOA) number 14-0211.07. Testing and certification for Miami-Dade County approvals let architects, specifiers, buyers and Authorities Having Jurisdiction (AHJ) know that products meet the unique requirements for a hurricane prone area. The Miami-Dade specification has been used as a design basis for coastal U.S. projects from Texas to New York. The achievement of receiving the stringent Miami-Dade County Product Control approval means that the Endurex 555 panel passed all the moisture, structural and impact testing. With this approval, Nudo's customers can depend on the Endurex 555 panel to withstand the architectural performance requirements necessary in hurricane weather conditions.

- A much lighter panel for easier handling
- Both "inside" and "outside" surfaces provide full impact resistance
- Not dependent upon the "steel" side out
- Cuts easily on the job or in the shop - eliminates the negatives of cutting steel
- "Hi-Tech" stabilizers are impervious to moisture
- Stabilizers are thinner yet stronger, allowing for a higher R-Value in 1" panels
- Wet glazing not always required

Nudo brings 60 years of experience in engineering "state-of-the-art" composite panels to the architectural panel industry. See why Nudo's high impact and security panels have been the composite panel of choice for the Pentagon, secure holding rooms, military units, mobile medical vehicles and communications enclosures.



IT'S ABOUT YOU

At Nudo, it's more about you than us. We are customer-focused and that means you can expect the responsiveness, consistency and solutions you need.

Responsiveness

- With over 60 years of experience, we understand the demands and expectations of the building, architecture, transportation and sign industries.
- Our goal is to make things easy for you, and that means a simple ordering process, fast turn times and our own transportation network that allows us to provide industry leading, on-time delivery on a dedicated truck.
- Our customer satisfaction score is the highest in our industry and a true testament to our understanding that you need answers quickly.



Consistency

- With an on-time delivery rate of 99% and a return rate of less than 0.2%, we stand behind our products and stand firm on 100% customer satisfaction - period!
- We are rated as having the best service in the industry by an independent assessment.
- We know trust is earned and can never be taken for granted. From the first order and every subsequent one after that, you can depend on us to deliver the right product, at the right price, at the right time.

Solutions

- We know that one size doesn't fit all. We address the variables that are inevitably present in any project and use our knowledge to provide you with product options that best suit your needs.
- Couple our wide variety of inner layer options, surface materials, substrates, thicknesses, sizes and colors with our specialized manufacturing equipment and extensive stocking level of raw materials and we can provide custom solutions for just about any panel need.

NUDO®

1500 Taylor Avenue
Springfield, IL 62703
www.Nudo.com

Ph: 800.826.4132
Fax: 217.528.8722

Rev 06/17

**Visit www.Nudo.com or
contact our local dealer for details.**