

# NUDO CLEARVIEW PARTITIONS

SOCIAL DISTANCING IN PUBLIC SPACES MADE EASY

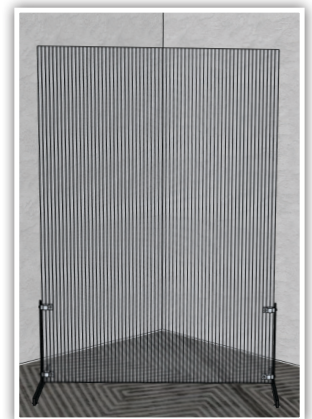
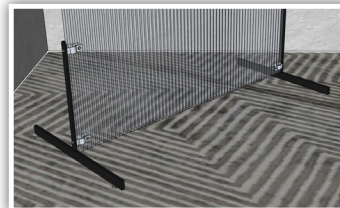
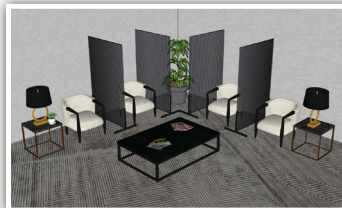


NUDO Clearview Partitions are designed to aid in social distancing within public spaces. Our transparent systems will provide your customers with the confidence to return to their active lifestyle at places such as the gym, restaurant, office, and retail locations. The applications are practically endless. NUDO Clearview Partitions are simple to assemble, cleanable, functional and easy to store.

## FEATURES & BENEFITS

- Impact resistant
- Lightweight, movable system
- Simple assembly
- Easy to clean
- Durable
- Functional
- Class A fire-rating
- Light Transmission Rate of 62%

|                     |         |         |
|---------------------|---------|---------|
| Partition Size      | 4' x 6' | 4' x 8' |
| Partition Weight    | 20 lbs  | 30 lbs  |
| Partition Thickness | 16mm    | 16mm    |



**WE ARE READY TO SUPPORT YOUR EMERGENCY FACILITY CONSTRUCTION.**  
We have inventory in stock, including over 75,000 sheets of raw goods.

**NUDO**<sup>®</sup>  
A VERZATEC COMPANY

1500 Taylor Avenue  
Springfield, IL 62703

Ph: 800.826.4132  
[www.Nudo.com](http://www.Nudo.com)



**LAMINATED PANELS WITH A PURPOSE**

Form 1024.L.Rev5.2020

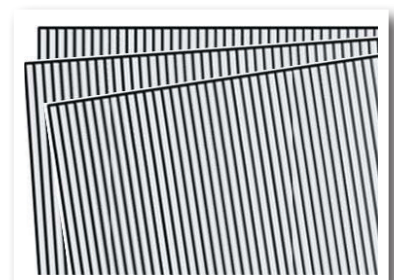
# NUDO CLEARVIEW PARTITIONS

## POLYCARBONATE SHEET SPECIFICATIONS

| POLYCARBONATE PHYSICAL PROPERTIES | UNIT               | SPECIFICATION |
|-----------------------------------|--------------------|---------------|
| Sheet Length                      | ft                 | 6' and 8'     |
| Sheet Width                       | ft                 | 4'            |
| Sheet Thickness                   | mm                 | 16            |
| Weight                            | lb/ft <sup>2</sup> | 0.51 / 0.55   |
| Weight                            | g/m <sup>2</sup>   | 2700          |
| Light Transmission                | %                  | 62            |
| Color                             |                    | Clear         |

| POLYCARBONATE TECHNICAL PROPERTIES              | UNIT                         | SPECIFICATION |
|---|------------------------------|---------------|
| Weighted Sound Reduction Index                  | dB                           | 21            |
| Cold Forming Radius<br>(Minimum Permissible)    | In                           | 118.1         |
| Thermal Conductance (U-Value)<br>(ASTM C976/90) | Btu/<br>hr ft <sup>2</sup>   | 0.35          |
| Thermal Resistance (ASTM C976/90)               | hr ft <sup>2</sup><br>°F/Btu | 2.44          |
| Heat Expansion Coefficient                      | hr ft <sup>2</sup>           | 2.86          |
| Possible Expansion Due to Heat<br>and Moisture  | in/ft                        | 0.036         |
| Max. Permanent Service<br>Temperature w/o Load  | °F                           | 248           |

| FIRE BEHAVIOR | CLASSIFICATION                                   |
|---------------|--|
| ASTM E84-01   | Class A  |
| ASTM D2843-93 | Low Smoke Density                                |
| ASTM D1929-68 | Self-Ignition Temperature<br>greater than 650 °F |



1500 Taylor Avenue  
Springfield, IL 62703

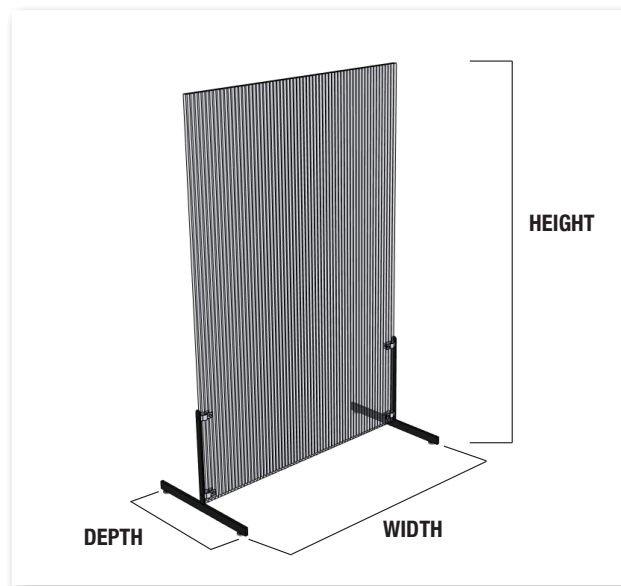
Ph: 800.826.4132  
www.Nudo.com



# NUDO CLEARVIEW PARTITIONS

## ASSEMBLED SYSTEM SPECIFICATIONS

| ASSEMBLED SYSTEM<br>PHYSICAL PROPERTIES | 4' X 6' SYSTEM |               | 4' X 8' SYSTEM |               |
|---|----------------|---------------|----------------|---------------|
|   | UNIT           | SPECIFICATION | UNIT           | SPECIFICATION |
| Assembled Height                        | ft             | 6.125         | ft             | 8.125         |
|   | in             | 73.5          | in             | 97.5          |
|   | m              | 1.8669        | m              | 2.4765        |
| Assembled Width                         | ft             | 4.4583        | ft             | 4.4583        |
|   | in             | 53.5          | in             | 53.5          |
|   | m              | 1.3589        | m              | 1.3589        |
| Assembled Depth                         | ft             | 2             | ft             | 2             |
|   | in             | 24            | in             | 24            |
|   | m              | 0.6096        | m              | 0.6096        |
| Approx. System Weight                   | lb             | 13.5          | lb             | 18            |
|   | g              | 6123          | g              | 8165          |



1500 Taylor Avenue  
Springfield, IL 62703

Ph: 800.826.4132  
www.Nudo.com





# NUDO CLEARVIEW PARTITIONS

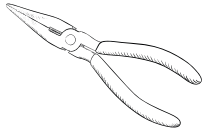
## ASSEMBLY INSTRUCTIONS

**Social Distancing in Public  
Spaces Made Easy**

### TOOLS NEEDED



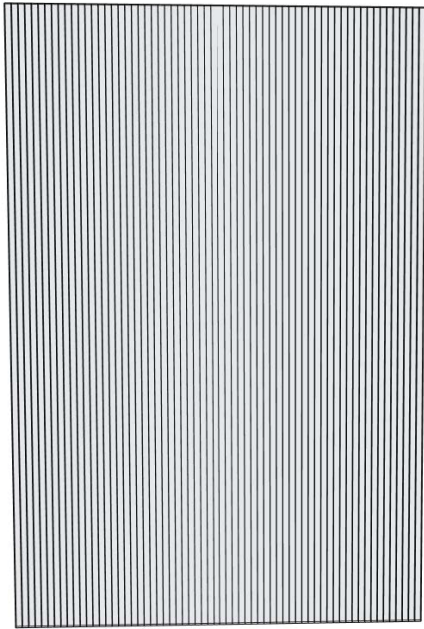
Phillips Screwdriver



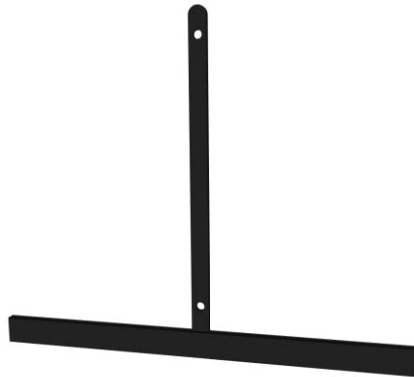
Needle Nose Pliers



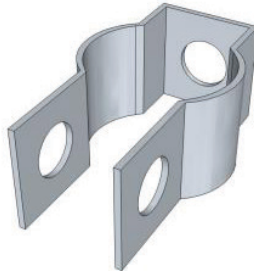
## PARTS



Panel (x1)



T-Leg (x2)

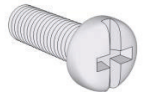


Clamp (x4)

### HARDWARE KIT



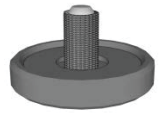
Washer (x4)



Clamp Screw (x4)



Clamp Bolt (x4)



Foot (x4)

RESPONSIVENESS

CONSISTENCY

SOLUTIONS

**NUDO**<sup>®</sup>  
A VERZATEC COMPANY

1500 Taylor Avenue  
Springfield, IL 62703

Ph: 800.826.4132  
[www.Nudo.com](http://www.Nudo.com)



**LAMINATED PANELS WITH A PURPOSE**

Form 1025.L.Rev6.2020

# NUDO CLEARVIEW PARTITIONS

## ASSEMBLY INSTRUCTIONS

### ASSEMBLY

#### STEP 1

Screw in feet to the base of the T-leg.

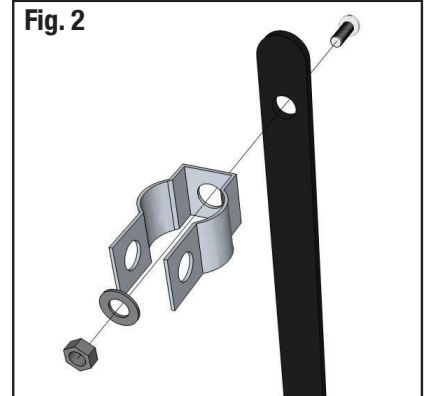
Fig. 1



#### STEP 2

Assemble the clamp with a washer, bolt, and clamp screw using a screwdriver and pliers.

Fig. 2



#### STEP 3

Complete these assemblies for both clamps on the left and right T-legs.

Fig. 3



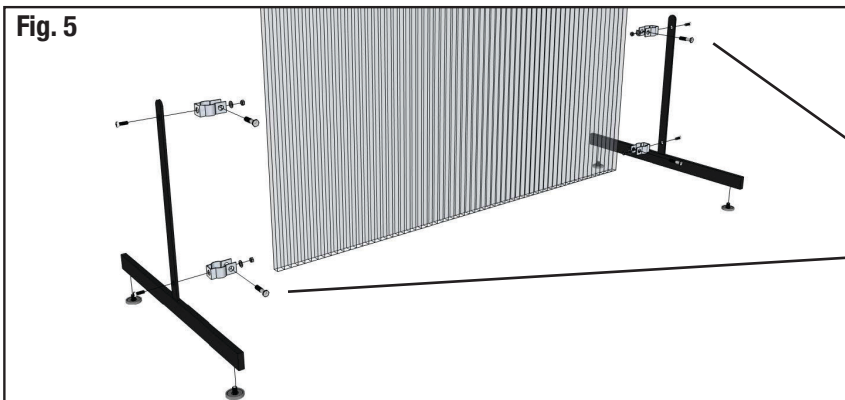
#### STEP 4

Remove the film from the panel and line up the clamp to the pilot holes. Screw in the panel screws through the panel and thread into the clamp.

Fig. 4



Fig. 5



#### STEP 5

Complete this assembly for both sides. DO NOT over tighten the clamps onto the panel.

NOTE: Rotate the clamps to orient the panel screws along the same face.

RESPONSIVENESS

CONSISTENCY

SOLUTIONS

**NUDO**<sup>®</sup>  
A VERZATEC COMPANY

1500 Taylor Avenue  
Springfield, IL 62703

Ph: 800.826.4132  
www.Nudo.com



LAMINATED PANELS WITH A PURPOSE

Form 1025.L.Rev6.2020