

NUDO®

A VERZATEC COMPANY



Hygienic Base Cove and HygiSeal

Water, Chemical & Fungus Resistant Wall Protection

NUDO is pleased to announce that we have partnered with Polysto to provide a complimentary hygienic base cove and HygiSeal to finish wall protection.

Solid Core PVC Hygienic Base Cove

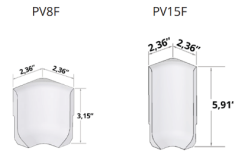
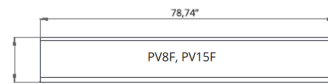


HygiSeal Sealant

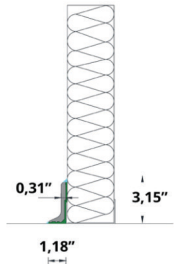


SOLID CORE PVC HYGIENIC BASE COVE

Impact Class 1 - no impact

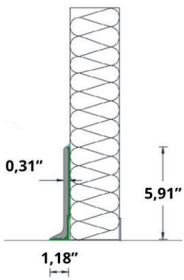


PV8F-W



	Kerb	Corner Internal/ External
Length	78.74"	5.91" / 5.91"
Height	3.15"	3.15"
Thickness	0.31"	0.31"
Weight	4.4 lbs	0.7 lbs
Amount/Pallet	3280.84 ft	500 pcs
Pallet Size	82.68" x 33.46" x 27.56"	47.24" x 31.5" x 27.56"
Pallet Weight	+ - 2315 lbs	+ - 441 lbs
Temperature Resistance	-22°F - +140°F (long exposure)	

PV15F-W



	Kerb	Corner Internal/ External
Length	78.74"	5.91" / 5.91"
Height	5.91"	5.91"
Thickness	0.31"	0.31"
Weight	8.8 lbs	1.54 lbs
Amount/Pallet	1640.42 ft	250 pcs
Pallet Size	82.68" x 33.46" x 27.56"	47.24" x 31.5" x 27.56"
Pallet Weight	+ - 2315 lbs	+ - 441 lbs
Temperature Resistance	-22°F - +140°F (long exposure)	

- Strong rigid PVC core designed for the food industry and clean rooms
- Water & chemical resistant
- Smooth, easy to clean surface
- Prefab corners
- Easy to replace
- Double water barrier
- Flexible connection between wall and floor
- Models PV8F-W/PV15F-W

HYGISEAL - THE TOTAL HYGIENIC SOLUTION

HygiSeal is a high-quality, neutral, single-component, construction sealant based on MS-Polymer



Basis	Hybrid Polymer
Consistency	Stable paste
Curing System	Moisture curing
Skin Formation* (23°C/50% R.H.)	Ca. 15 min
Curing speed * (23°C/50% R.H.)	1.8 - 2.3 mm/24h avoid any joint movement within 72 hours
Hardness**	Ca. 90 ± 5 Shore A
Density	1.72 g/ml (1.79 oz/fl oz)
Viscosity	Ca. 100 cP
Elastic Recovery (ISO 7389)**	> 75%
Maximum Allowed Distortion	± 20%
Shear Strength**	2.75 N/mm ² (measured on AlMgSi, 2mm thickness, 25x25, 10mm/min)
Temperature Resistance**	-40 °C → 90°C (-40 °F → 194°F)
Application Temperature	5 °C → 35°C (41 °F → 95°F)

* These values may vary depending on environmental factors such as, temperature, moisture, and type of substrates.

** This information relates to fully cured product.

Scan to visit our website:



NUDO[®]
A VERZATEC COMPANY

1500 Taylor Avenue
Springfield, IL 62703
www.Nudo.com

Ph: 800.826.4132
Fax: 217.528.8722