

NUDO CLEARVIEW PARTITIONS

SOCIAL DISTANCING IN PUBLIC SPACES MADE EASY

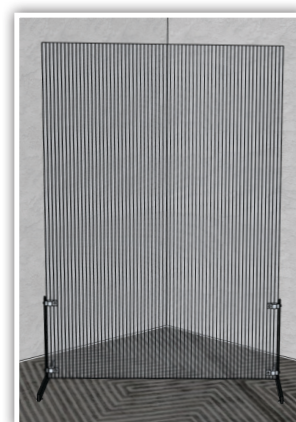
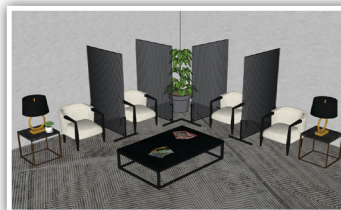


NUDO Clearview Partitions are designed to aide in social distancing within public spaces. These opaque panels will provide your customers with the confidence to return to their active lifestyle at places such as the gym, restaurant, office, and retail locations. The applications are practically endless. NUDO Clearview Partitions are simple to assemble, cleanable, functional and easy to store.

FEATURES & BENEFITS

- Impact resistant
- Lightweight, movable system
- Simple assembly
- Easy to clean
- Durable
- Functional
- Class A fire-rating
- Light Transmission Rate of 62%

Partition Size	4' x 6'	4' x 8'
Partition Weight	20 lbs	30 lbs
Partition Thickness	16mm	16mm



WE ARE READY TO SUPPORT YOUR EMERGENCY FACILITY CONSTRUCTION.
We have inventory in stock, including over 75,000 sheets of raw goods.

NUDO[®]
A VERZATEC COMPANY

1500 Taylor Avenue
Springfield, IL 62703

Ph: 800.826.4132
www.Nudo.com



LAMINATED PANELS WITH A PURPOSE

Form 1023.L.Rev5.2020

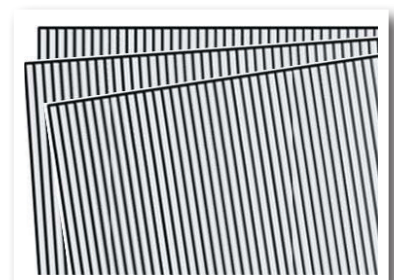
NUDO CLEARVIEW PARTITIONS

POLYCARBONATE SHEET SPECIFICATIONS

POLYCARBONATE PHYSICAL PROPERTIES	UNIT	SPECIFICATION
Sheet Length	ft	6' and 8'
Sheet Width	ft	4'
Sheet Thickness	mm	16
Weight	lb/ft ²	0.51 / 0.55
Weight	g/m ²	2700
Light Transmission	%	62
Color		Clear

POLYCARBONATE TECHNICAL PROPERTIES	UNIT	SPECIFICATION
Weighted Sound Reduction Index	dB	21
Cold Forming Radius (Minimum Permissible)	In	118.1
Thermal Conductance (U-Value) (ASTM C976/90)	Btu/ hr ft ²	0.35
Thermal Resistance (ASTM C976/90)	hr ft ² °F/Btu	2.44
Heat Expansion Coefficient	hr ft ²	2.86
Possible Expansion Due to Heat and Moisture	in/ft	0.036
Max. Permanent Service Temperature w/o Load	°F	248

FIRE BEHAVIOR	CLASSIFICATION
ASTM E84-01	Class A
ASTM D2843-93	Low Smoke Density
ASTM D1929-68	Self-Ignition Temperature greater than 650 °F



1500 Taylor Avenue
Springfield, IL 62703

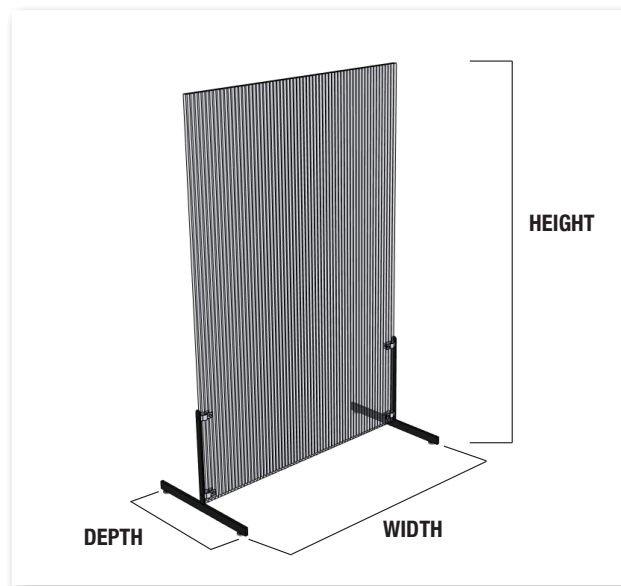
Ph: 800.826.4132
www.Nudo.com



NUDO CLEARVIEW PARTITIONS

ASSEMBLED SYSTEM SPECIFICATIONS

ASSEMBLED SYSTEM PHYSICAL PROPERTIES	4' X 6' SYSTEM		4' X 8' SYSTEM	
	UNIT	SPECIFICATION	UNIT	SPECIFICATION
Assembled Height	ft	6.125	ft	8.125
	in	73.5	in	97.5
	m	1.8669	m	2.4765
Assembled Width	ft	4.4583	ft	4.4583
	in	53.5	in	53.5
	m	1.3589	m	1.3589
Assembled Depth	ft	2	ft	2
	in	24	in	24
	m	0.6096	m	0.6096
Approx. System Weight	lb	13.5	lb	18
	g	6123	g	8165



1500 Taylor Avenue
Springfield, IL 62703

Ph: 800.826.4132
www.Nudo.com



NUDO CLEARVIEW PARTITIONS

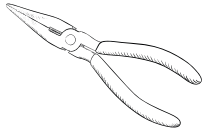
ASSEMBLY INSTRUCTIONS

Social Distancing in Public Spaces Made Easy

TOOLS NEEDED



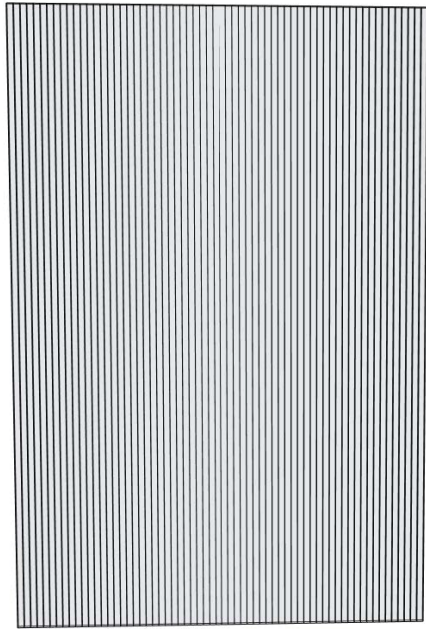
Phillips Screwdriver



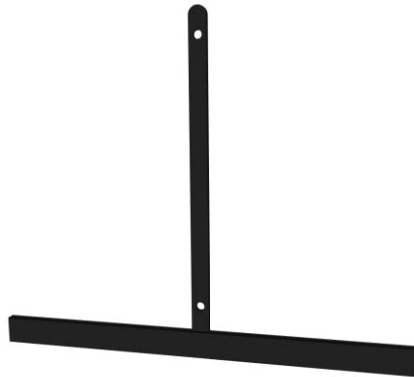
Needle Nose Pliers



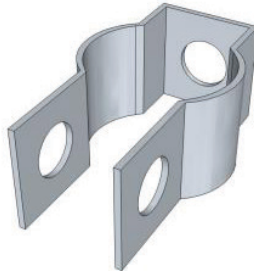
PARTS



Panel (x1)



T-Leg (x2)

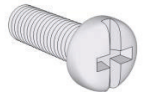


Clamp (x4)

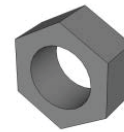
HARDWARE KIT



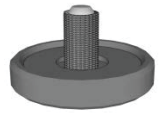
Washer (x4)



Clamp Screw (x4)



Clamp Bolt (x4)



Foot (x4)

RESPONSIVENESS

CONSISTENCY

SOLUTIONS

NUDO[®]
A VERZATEC COMPANY

1500 Taylor Avenue
Springfield, IL 62703

Ph: 800.826.4132
www.Nudo.com



LAMINATED PANELS WITH A PURPOSE

Form 1025.L.Rev6.2020

NUDO CLEARVIEW PARTITIONS

ASSEMBLY INSTRUCTIONS

ASSEMBLY

STEP 1

Screw in feet to the base of the T-leg.

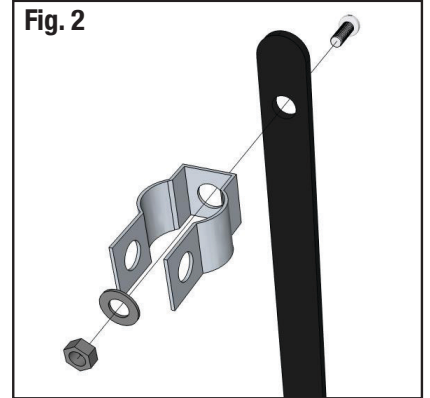
Fig. 1



STEP 2

Assemble the clamp with a washer, bolt, and clamp screw using a screwdriver and pliers.

Fig. 2



STEP 3

Complete these assemblies for both clamps on the left and right T-legs.

Fig. 3



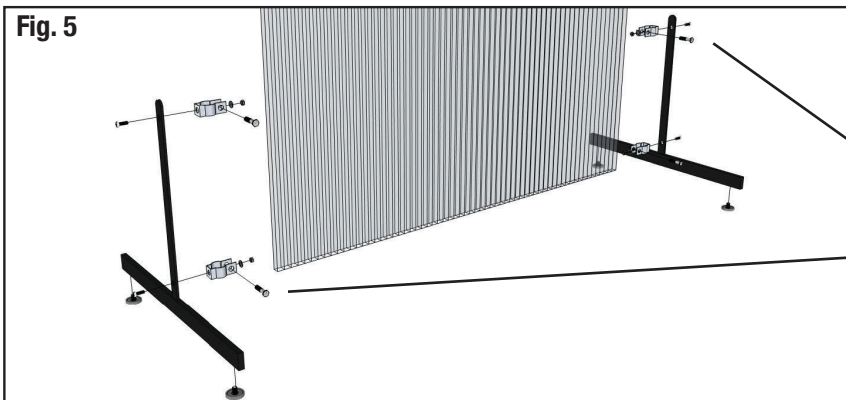
STEP 4

Remove the film from the panel and line up the clamp to the pilot holes. Screw in the panel screws through the panel and thread into the clamp.

Fig. 4



Fig. 5



STEP 5

Complete this assembly for both sides. DO NOT over tighten the clamps onto the panel.

NOTE: Rotate the clamps to orient the panel screws along the same face.

RESPONSIVENESS

CONSISTENCY

SOLUTIONS

NUDO[®]
A VERZATEC COMPANY

1500 Taylor Avenue
Springfield, IL 62703

Ph: 800.826.4132
www.Nudo.com



LAMINATED PANELS WITH A PURPOSE

Form 1025.L.Rev6.2020